

Volume 18, Issue 9
May 8, 2024

Results:

Open USBC - 2024											
Final (120 boards)		Set score of form "Ax" or "Rx" indicates pending Appeal or Ruling. IMPs Total may change.									
07-May-2024		The colored score boxes indicate the team with seating rights for that segment of play.									
#	TEAM	IMPs Total	SET #1	SET #2	SET #3	SET #4	SET #5	SET #6	SET #7	SET #8	Penalty (IMPs)
1	Nickell	104	33	20	36	15					
2	Fleisher	184	27	41	27	89					

- USBF President**
Aaron Silverstein
- USBF Vice President**
Steve Garner
- USBF COO & Secretary**
Jan Martel
- USBF CFO & Treasurer**
Max Schireson
- USBF Recorder**
Jack Oest
- Chief Communications Officer**
Suzi Subeck
- Directors**
McKenzie Myers, DIC
Ken Horwedel
Chris Wiegand
- Tournament Organizer**
Jan Martel
- Software Expert**
Al Hollander
- VuGraph Organizers**
Rob Barrington

- Appeals Administrator**
Suzi Subeck, Chairman
- Appeals Panel:**
Fawik Abdou
Dana Berkowitz
Cheri Bjerkan
Gary Cohler
Rich DeMartino
Ish DelMonte
Mitch Dunitz
Marty Fleisher
Ron Gerard
Marty Hirschman
George Jacobs
Ralph Katz
Bobby Levin
Chip Martel
Eric Rodwell
Danny Sprung
Josh Stark
Adam Wildavsky
- Bulletin Editor**
Suzi Subeck
- Hospitality**
Julie Arbit
Marie-France Benoit

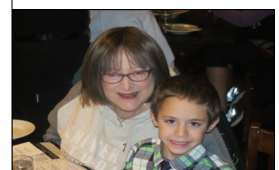
UNITED STATES BRIDGE CHAMPIONSHIPS

“Trials” and Tribulations



Finn Kolesnik, on the VuGraph!

Ed. Note: With delayed broadcasting, it is challenging to watch every hand for write ups. If anyone has a particularly interesting hand, please send me the board # & match # with any important details. I will do my best to review and include it. Email to stansubeck@prodigy.net. Thank you!



Open Teams Entered

Nickell	Nick Nickell Bye to QF Bobby Levin Geoff Hampson Jill Levin, NPC	Ralph Katz Steve Weinstein Eric Greco
Lebowitz	Adam Grossack, Capt Zach Grossack Zia Mahmood	Larry Lebowitz Michael Rosenberg Daniel Korbel
Fleisher	Marty Fleisher, Capt Brad Moss Kevin Bathurst	Chip Martel Joe Grue John Hurd
Bailey	Bill Bailey, Capt Aaron Jones Arti Bhargava	Josh Donn Owen Lien
Balleisen	Aaron Balleisen, Capt Nicole Qian	Zhiyu Cheng Philip Wang
Bramley	Bart Bramley, Capt Brian Platnick	Kit Woolsey Kevin Rosenberg
Gu	Jiang Gu, Capt Ai-Tai Lo Josh Sher	Walter Lee Alex Kolesnik Ron Smith
Hamman	Adam Wildavsky, Capt Doug Doub John Schermer	Bob Hamman Neil Chambers Greg Hinze
Han	Yanong Han, Capt Qiang Zhang	Ming Sheng Brian Zhang
Juster	Jeff Juster, Capt Andy Goodman Shan Huang	Jacob Morgan Mike Passell Kevin Dwyer Rimstedt
Petrov	Dian Petrov, Capt Matthew Haag	Val Kovachev Rumen Dimitrov
Robinson	Eric Robinson, Capt Ish DelMonte David Berkowitz	Michael Kamil Finn Kolesnik Steve Garner
Rosenthal	Andrew Rosenthal, Capt Chris Willenken John Kranyak	Aaron Silverstein Gavin Wolpert Vince Demuy
Schireson	Max Schireson, Capt John McAllister Olivia Schireson	Debbie Rosenberg Will Watson
Simson	Doug Simson, Capt Eddie Wold David Grainger	Eric Rodwell Joel Wooldridge Venkatrao Koneru



Mixed Teams Entered

Carmichael	Tom Carmichael, Capt Christian Jolly	Jenni Carmichael Julie Arbit
Derman	Ethan Derman, Capt George Klemic	Avery Silverstein Maya Jonas-Silver
Ding	Donna Compton, Capt Hong Ding	Chris Compton Adam Wildavsky
Dinkin	Sam Dinkin, Capt Harrison Luba Jeff Ferro	Yoko Sobel Cynthia Huang Jean Barry
Ivatury	Uday Ivatury, Capt Shawn Quinn Lapt Chan	Allan Graves Irina Kislitsyna Christal Henner
Lewis	Paul Lewis, Capt Mark Itabashi Cheri Bjerkan	Linda Lewis Disa Eythorsdottir Larry Robbins
Millens	Shan Huang, Capt Kevin Dwyer Sandra Rimstedt	Joan Millens Cecilia Dwyer Rimstedt
Pollack	Rozanne Pollack, Capt Dave Caprera	Bill Pollack Anne Brenner
Rosenthal	Andrew Rosenthal, Capt Chris Willenken Michael Rosenberg	Migry Campanile Jenny Wolpert Debbie Rosenberg
Rubenstein	Stewart Rubenstein, Capt Zach Grossack Adam Grossack	Anam Tebha Giorgia Botta Emma Kolesnik
Zhang	Susan Zhang, Capt Eddie Wold Janice Molson	Sylvia Shi Daniel Korbel



No Electronic Devices are Permitted in the Playing Area.

This applies to players AND kibitzers.

Severe penalties will be assessed for violation of this rule.

Please turn off all cell phones and check them at the door.

The USBF reserves the right to wand anyone entering the playing field.



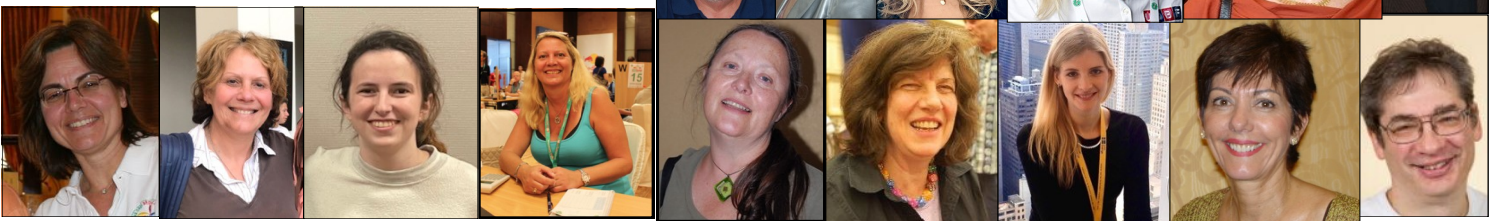
Senior Teams Entered

Aker	Jeff Aker, Capt John Lusky Barry Rigal	Allan Falk Glenn Milgrim Ron Rubin
Cappelli	Bob Cappelli, Capt Bob Bitterman	Mark Aquino Mark Bendure
Goodman	Andy Goodman, Capt Pratap Rajadhyaksha Ron Smith	Mike Passell Venkatrao Koneru Billy Cohen
Hamman	Bob Hamman, Capt Doug Doub	Neil Chambers Adam Wildavsky
Lall	Hemant Lall, Capt Eric Rodwell Zia Mahmood	Reese Milner Eddie Wold Michael Rosenberg
Reynolds	Tom Reynolds, Capt Bernie Greenspan	Lance Kerr Fred Schenker
Simson	Doug Simson, Capt Jim Krekorian Steve Beatty	Curtis Cheek Peter Weichsel Fred Stewart
Tulin	Gary Cohler, Capt Alan Sontag Kit Woolsey	Stanley Tulin Ralph Katz Bart Bramley
Wolfson	Jeff Wolfson, Capt David Berkowitz	Steve Garner Jeff Meckstroth



Women's Teams Entered

Baker	Lynn Baker, Capt Kerri Sanborn Cecilia Dwyer Rimstedt [alternate] Debbie Rosenberg	Olivia Schireson Jill Meyers Sandra Rimstedt [alternate] Migry Campanile
Cooper	Kitty Cooper, Capt Linda Lewis Rozanne Pollack	Lynne Feldman Hjordis Eythorsdottir Cheri Bjerkan
Zhang	Susan Zhang, Capt Janice Molson	Sylvia Shi Irina Levitina



Open Team Tournament Schedule

OPEN SCHEDULE			
Day	Date	Time (CDT)	Boards
Round of 16 (if 14-16 teams enter; fewer than 14 will be rr with different schedule)			
Wednesday	May 1	10:00 - 12:00 12:15 - 2:15 3:30 - 5:30 5:45 - 7:45	Segment 1 Boards 1-15 Segment 2 Boards 16-30 75 minute Lunch Break Segment 3 Boards 31-45 Segment 4 Boards 46-60
Thursday	May 2	10:00 - 12:00 12:15 - 2:15 3:30 - 5:30 5:45 - 7:45	Segment 5 Boards 1-15 Segment 6 Boards 16-30 75 minute Lunch Break Segment 7 Boards 31-45 Segment 8 Boards 46-60
Quarterfinal			
Friday	May 3	10:00 - 12:00 12:15 - 2:15 3:30 - 5:30 5:45 - 7:45	Segment 1 Boards 1-15 Segment 2 Boards 16-30 75 minute Lunch Break Segment 3 Boards 31-45 Segment 4 Boards 46-60
Saturday	May 4	10:00 - 12:00 12:15 - 2:15 3:30 - 5:30 5:45 - 7:45	Segment 5 Boards 1-15 Segment 6 Boards 16-30 75 minute Lunch Break Segment 7 Boards 31-45 Segment 8 Boards 46-60
Semifinal			
Sunday	May 5	10:00 - 12:00 12:15 - 2:15 3:30 - 5:30 5:45 - 7:45	Segment 1 Boards 1-15 Segment 2 Boards 16-30 75 minute Break Segment 3 Boards 31-45 Segment 4 Boards 46-60
Monday	May 6	10:00 - 12:00 12:15 - 2:15 3:30 - 5:30 5:45 - 7:45	Segment 5 Boards 1-15 Segment 6 Boards 16-30 75 minute Break Segment 7 Boards 31-45 Segment 8 Boards 46-60
Final			
Tuesday	May 7	10:00 - 12:00 12:15 - 2:15 3:30 - 5:30 5:45 - 7:45	Segment 1 Boards 1-15 Segment 2 Boards 16-30 75 minute Break Segment 3 Boards 31-45 Segment 4 Boards 46-60
Wednesday	May 8	10:00 - 12:00 12:15 - 2:15 3:30 - 5:30 5:45 - 7:45	Segment 5 Boards 1-15 Segment 6 Boards 16-30 75 minute Break Segment 7 Boards 31-45 Segment 8 Boards 46-60

Location: TBD

Lovebridge practice sessions

Day	Date	Time (CDT)
Tuesday	April 30	5:00 PM - 7:00 PM
Thursday	May 9	5:00 PM - 7:00 PM
Saturday	May 18	5:00 PM - 7:00 PM
Wednesday	May 22	5:00 PM - 7:00 PM

PRE-TOURNAMENT CAPTAINS & PLAYERS MEETINGS

On Zoom			
Event	Day	Date	Time (CDT)
Open	Tuesday	April 30	9:00 PM
Mixed	Thursday	May 9	9:00 PM
Senior	Saturday	May 18	9:00 PM
Women's	Monday or Wednesday	May 20 or 22	9:00 PM

Mixed Team Tournament Schedule

Mixed Schedule			
Round Robin or KO - Schedule will depend on number of teams			
Day	Date	Time	Boards
Friday	May 10		
Saturday	May 11		
Quarterfinal			
Sunday	May 12	10:00 - 12:00 12:15 - 2:15 3:30 - 5:30 5:45 - 7:45	Segment 1 Boards 1-15 Segment 2 Boards 16-30 75 minute Break Segment 3 Boards 31-45 Segment 4 Boards 46-60
Monday	May 13	10:00 - 12:00 12:15 - 2:15 3:30 - 5:30 5:45 - 7:45	Segment 5 Boards 1-15 Segment 6 Boards 16-30 75 minute Break Segment 7 Boards 31-45 Segment 8 Boards 46-60
Semifinal			
Tuesday	May 14	10:00 - 12:00 12:15 - 2:15 3:30 - 5:30 5:45 - 7:45	Segment 1 Boards 1-15 Segment 2 Boards 16-30 75 minute Break Segment 3 Boards 31-45 Segment 4 Boards 46-60
Wednesday	May 15	10:00 - 12:00 12:15 - 2:15 3:30 - 5:30 5:45 - 7:45	Segment 5 Boards 1-15 Segment 6 Boards 16-30 75 minute Break Segment 7 Boards 31-45 Segment 8 Boards 46-60
Final			
Thursday	May 16	10:00 - 12:00 12:15 - 2:15 3:30 - 5:30 5:45 - 7:45	Segment 3 Boards 31-45 Segment 4 Boards 46-60 75 minute Break Segment 5 Boards 61-75 Segment 6 Boards 76-90
Friday	May 17	10:00 - 12:00 12:15 - 2:15 3:30 - 5:30 5:45 - 7:45	Segment 5 Boards 1-15 Segment 6 Boards 16-30 75 minute Break Segment 7 Boards 31-45 Segment 8 Boards 46-60

Q: You'll find me in Mercury, Earth, Mars, Jupiter, Saturn, and Uranus. But never Neptune, or Venus. What am I?

A: The letter "R".

Q: How many months have 28 days?

A: Every month has 28 days.

Q: I can be cracked, made, told, and played. What am I?

A: A joke.

Q: I cannot talk, but I always reply when spoken to.

What am I?

A: An echo.

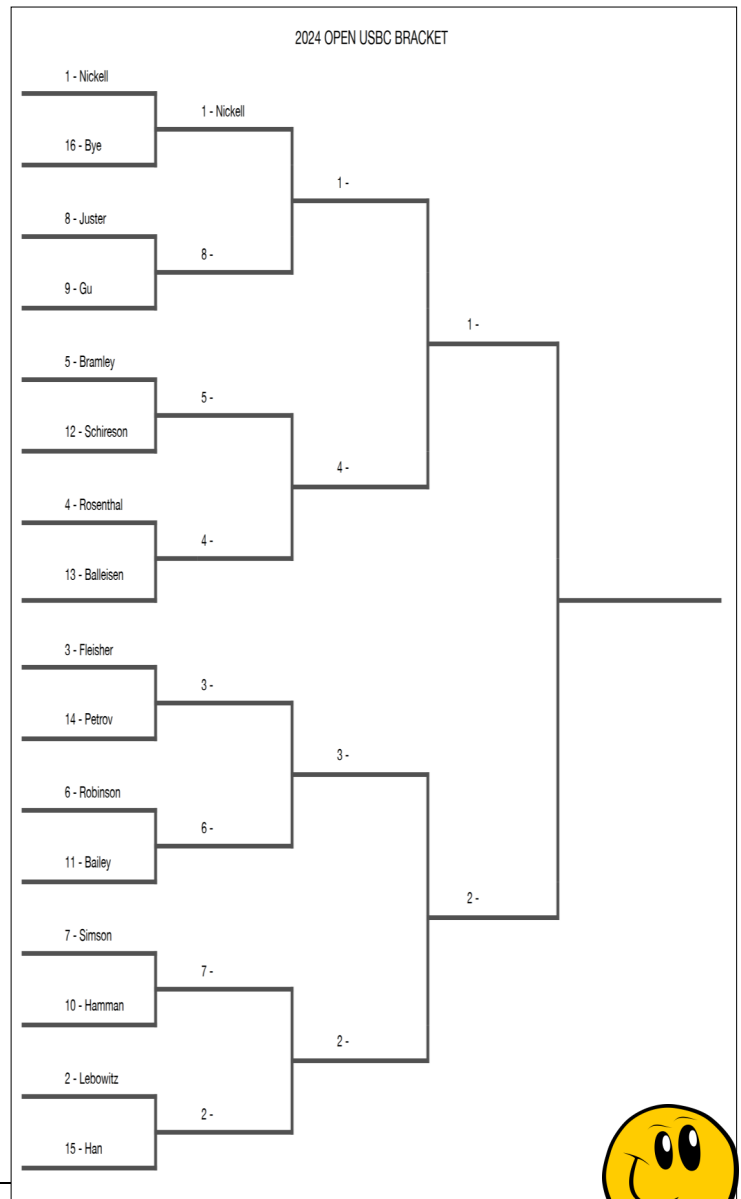
Q: When is the top of a mountain similar to a savings account?

A: When it peaks one's interest.



Senior Schedule

SENIOR SCHEDULE			
Round Robin or KO - Schedule will depend on number of teams			
Day	Date	Time	Boards
Sunday	May 19		
Monday	May 20		
Quarterfinal			
Tuesday	May 21	10:00 - 12:00 12:15 - 2:15 3:30 - 5:30 5:45 - 7:45	Segment 1 Boards 1-15 Segment 2 Boards 16-30 75 minute Break Segment 3 Boards 31-45 Segment 4 Boards 46-60
Wednesday	May 22	10:00 - 12:00 12:15 - 2:15 3:30 - 5:30 5:45 - 7:45	Segment 5 Boards 1-15 Segment 6 Boards 16-30 75 minute Break Segment 7 Boards 31-45 Segment 8 Boards 46-60
Semifinal			
Thursday	May 23	10:00 - 12:00 12:15 - 2:15 3:30 - 5:30 5:45 - 7:45	Segment 1 Boards 1-15 Segment 2 Boards 16-30 75 minute Break Segment 3 Boards 31-45 Segment 4 Boards 46-60
Friday	May 24	10:00 - 12:00 12:15 - 2:15 3:30 - 5:30 5:45 - 7:45	Segment 5 Boards 1-15 Segment 6 Boards 16-30 75 minute Break Segment 7 Boards 31-45 Segment 8 Boards 46-60
Final			
Saturday	May 25	10:00 - 12:00 12:15 - 2:15 3:30 - 5:30 5:45 - 7:45	Segment 1 Boards 1-15 Segment 2 Boards 16-30 75 minute Break Segment 3 Boards 31-45 Segment 4 Boards 46-60
Sunday	May 26	10:00 - 12:00 12:15 - 2:15 3:30 - 5:30 5:45 - 7:45	Segment 5 Boards 1-15 Segment 6 Boards 16-30 75 minute Break Segment 7 Boards 31-45 Segment 8 Boards 46-60



Beth Palmer WOMEN'S SCHEDULE			
Round Robin or Quarterfinal if 5-8 teams enter - schedule will depend on number of teams			
Day	Date	Time	Boards
Tuesday	May 21		
Wednesday	May 22		
Semifinal			
Thursday	May 23	10:00 - 12:00 12:15 - 2:15 3:30 - 5:30 5:45 - 7:45	Segment 1 Boards 1-15 Segment 2 Boards 16-30 75 minute Break Segment 3 Boards 31-45 Segment 4 Boards 46-60
Friday	May 24	10:00 - 12:00 12:15 - 2:15 3:30 - 5:30 5:45 - 7:45	Segment 5 Boards 1-15 Segment 6 Boards 16-30 75 minute Break Segment 7 Boards 31-45 Segment 8 Boards 46-60
Final			
Saturday	May 25	10:00 - 12:00 12:15 - 2:15 3:30 - 5:30 5:45 - 7:45	Segment 1 Boards 1-15 Segment 2 Boards 16-30 75 minute Break Segment 3 Boards 31-45 Segment 4 Boards 46-60
Sunday	May 26	10:00 - 12:00 12:15 - 2:15 3:30 - 5:30 5:45 - 7:45	Segment 5 Boards 1-15 Segment 6 Boards 16-30 75 minute Break Segment 7 Boards 31-45 Segment 8 Boards 46-60

Beth Palmer Women's Schedule

Q: A man goes out for a walk during a storm with nothing to protect him from the rain. He doesn't have a hat, a hood, or an umbrella. But by the end of his walk, there isn't a single wet hair on his head. Why doesn't the man have wet hair?

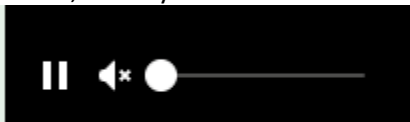
A: He's bald.

Q: I love to dance, and twist. I shake my tail as I sail away when I fly wingless into the sky. What am I?

A: A kite.

2024 USBCs Kibitzing - There will be delayed kibitzing for all of the 2024 USBCs on LoveBridge

You can follow the USBC on the <https://vugraph.lovebridge.com/> website. If you get to the voice commentary and there is no sound, you need to "unmute." When you first get to the page, there is a small icon of a speaker in the middle of your screen with an x on it. Click there to unmute. If you miss that icon, move your cursor to the bottom left of the screen and you should see a something like this:



Click on the speaker to unmute.

Vugraph is delayed for 30 minutes or until all tables have completed play on a board, whichever is later.

Kibitzing Schedule (EDT)

For all KO days of the 2024 USBCs, kibitzing times will be :

Segment 1: 11:30 am EDT; Segment 2: 1:45 pm EDT

BREAK

Segment 3: 5:00 pm EDT; Segment 4: 7:15 pm EDT

For Round Robin days, each kibitzing segment will start 30 minutes after play starts. No voice for RR's.

To listen to commentary, search for the TV icon! It will send you to the page where you can choose from the available live commentators. If it doesn't do anything, no one is commenting.

Deep Involvement: Choose the "Match view" at the starting page of your event. Your screen will be divided into 4 small screens – 2 of them showing the 2 tables of the match you choose, the other 2 having the scoresheet for your match and the current scores of the other matches. In the 2x2 view you can personalize the content in all your windows. (The 2x2 view is not available on mobiles.)

Think together!

When watching a table, click on a name and choose "Kibitz". Instead of seeing all 4 hands, you will see what the player sees, and you can decide what you would do.

More Information:

Be well informed and tell your friends: while following the play, you can click many items. The image of the sticker with the number of the board (upper right) takes you to the results of the board, in the bottom right corner, the arrow takes you to the scoresheet, the DDS shows the double dummy analyses, beside that there is a button for the other table of the same match, at the top left corner you can see the bidding with alerts and the explanations (mouse over), the tricks already played, and the double dummy analysis for the available number of tricks with the par score.

Navigation icons:

While surfing here and there in the vugraph, or amongst the archive sessions, there are icons to help you. You can always go back to the main page with the "house" or to the standings with the "scores". If you cannot see the icons, move your mouse, or touch your screen and they pop up immediately. There is a built-in back button because the back button of your browser will always take you to the starting page. If this is not what you wanted, push next in your browser and you can continue where you were.

Replay:

After the event you can find every board from every table easily. While replaying the hands, the only surprise can be the way "next board" button works. If you have arrived from a scoresheet, it navigates through the scoresheet. If you have arrived from a screen where the results were shown for a given board, the same buttons move you through the list.



I love to watch
The experts play
I hope to be one
Soon someday!



Kibitzing...

2024 USBCs Hospitality

We are returning to our pre-pandemic hospitality, with the hospitality suite (room 2321) open most of the day for socializing, Vugraph, and snacks. We will be providing breakfast and lunch each **day of play**. Marie-France Benoit will be our lead hostess, with help from Jacob Morgan and Julie Arbit, who makes the best guacamole. If you're at the tournament and can volunteer to help with hospitality (pick up items at Costco or nearby stores or restaurants, preparing food) please let Jan or Marie-France know.

Breakfast: From 8-10 am. There will be the usual breakfast food: cereal, bagels, toast, salmon, fruit, juice, coffee and tea. For those who prefer Keurig coffee, that will be available. So long as the suite doesn't become too crowded, you are welcome to eat there. No masking requirement.

Lunch: On the first four days of each event we will be serving a buffet lunch in a hotel banquet room, usually the Slate and Cyan rooms at the front of the hotel; we will have signs in the Player Break Room and Hospitality Suite with daily location. The hotel will be supplying what they do best: salads and chips. We will be bringing in 2 or 3 hot dishes from a local restaurant each day. There should be enough room for you to eat in the hotel banquet room, but you are welcome to take food from there to an outside table or to your hotel room. Lunch will be served from about half an hour before the morning session is supposed to end until about half an hour after the afternoon session starts. After the first 4 days of each event, lunch will be available in the hospitality suite at the break. There will be a main dish (sandwiches, chicken, main dish salads, pizza) as well as tuna salad, green salad, cheese, fruit, berries, cookies or other desserts. Water and soft drinks will be available in refrigerators. As with breakfast, you are welcome to eat in the hospitality suite unless it is too crowded.

Let us know if you have specific needs. Our hosts will do their very best to accommodate you.

Playing Rooms & Player's Break Room

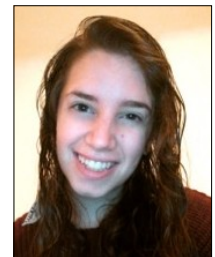
We will have bottled water in the playing rooms and if there is a refrigerator in a playing room we'll stock it with soft drinks.

We will have bottled water in the Player's Break Room (1321), as well as soft drinks, Nespresso, some packaged snacks, and some fruit. Please keep your voices down in the Break Room where we are working.

Masks will be required in playing rooms **only if your screenmate asks you to wear one**. You do not have to put on a mask when you summon a director or ask for coffee, water or an escort outside to smoke.



Marie-France



Julie Arbit

Q: When you stop to look, you can always see me. But if you try to touch me, you can never feel me. Although you walk towards me, I remain the same distance from you. What am I?

A: The horizon

Q: You see a boat filled with people. It has not sunk. But when you look back, you don't see a single person on the boat. Why?

A: All the people on board are married.

Q: What is it that no one wants to have, but no one wants to lose either?

A: A lawsuit.

Q: I welcome the day with a show of light, I stealthily came here in the night. I bathe the earthy stuff at dawn, But by noon, alas! I'm gone.

A: The morning dew.

Q: What goes through cities and fields, but never moves?

A: A road.

Q: What can be touched but can't be seen?

A: Someone's heart.

Q: When it is alive we sing, when it is dead we clap our hands. What is it?

A: A birthday candle.



Hard Sudoku

Sudoku Solutions on Page 16

				7				
2	6		3					5
			4					2
				9				
		5		8	2		9	
	7					5		4
					6		7	
	3	7						
	4		8		1	6		

Sudoku 1

Q: What can go through glass without breaking it?

A: Light.

Q: What gets bigger the more you take away?

A: A hole.

Q: I have no life, but I can die. What am I?

A: A battery.

Q: What kind of room has no walls, door or windows?

A: A mushroom.

Q: It belongs to you, but your friends use it more. What is it?

A: Your name.

Q: What 2 things can you never eat for breakfast?

A: Lunch and dinner.

Q: I make a loud sound when I'm changing. When I do change, I get bigger but weigh less. What am I?

A: Popcorn.

Q: It has keys, but no locks. It has space, but no room. You can enter, but can't go inside. What is it?

A: A keyboard.

Q: I'm orange, I wear a green hat and I sound like a parrot. What am I?

A: A carrot.

Q: What runs all around a backyard, yet never moves?

A: A fence.



		5					1	
			2				6	
9		4						
					5		8	
4				3	9			1
				8				2
							2	
		7	1	5	3			4
	6						3	

Please be "scent" sitive! Many players have allergies and have trouble breathing when perfumed aromas are present! Thank you!!



Puzzle Page ...

New York City 2

Find and circle all of the words that are hidden in the grid.
The remaining letters spell a secret message.

M S L A I R O M E M S E I T I S R E V I N U
 J U T Y T R E B I L F O E U T A T S O H N C
 J F S A Y I T Z G K S R E G N A R E P O H E
 R A L E T N A D H P R S S P S O P C U R L A
 R I Z R U E D P E I R A I T D R A T Y H E N
 I S T O E M N F O E G E P T N R O S M E T S
 S I O C C G M I V L R H R T N E L D K N D A
 E L U K K M D I S S L O L E C E M E N N E T
 G I R E R N D I L L P O G I R E U U A E T N
 E C I F A E T D R E A I T B N N P L N H V E
 L O S E P W H P E B E N U H E E S S E O B M
 L N T L L S I Y G H N I D V E I A C O L M N
 O A S L A P P N A B L Y A F S A Y P L R L I
 C L E E R A I L N D A N L I E C T I H S P A
 O L M R T P L R I N O L L K L R H E S M E T
 R E E C N E A N K S E L L O O E R C R U I R
 N Y D E E R G E I G E T N E V O A Y R E T E
 I C I N C S E D L E S E S A T I R N T S H T
 E N A T I S A T V N E T W O R K S B N U E N
 T E E E N M T W E B R O N X Z O O N T M I E
 E P A R A D E S S L I N C O L N T U N N E L



Someone called me
a name that is
wrong!
I'm King of the
Hearts,
I'm never King
Kong!

APOLLO THEATER	FDNY	NETS	SILICON ALLEY
BALLET	HIGH LINE	NEWSPAPERS	STATEN ISLAND FERRY
BRONX ZOO	LINCOLN TUNNEL	NYPD	STATUE OF LIBERTY
BROOKLYN BRIDGE	MADISON AVENUE	OPERA	THE CYCLONE
CARNEGIE HALL	MEDIA	PARADES	TOURISTS
CENTRAL PARK	MEMORIALS	PIERS	TV NETWORKS
CHRYSLER BUILDING	METS	PORT	UNIVERSITIES
COLLEGES	MONUMENTS	PROSPECT PARK	VENDORS
DIVERSE	MUSEUM MILE	RANGERS	WAVE HILL
ELLIS ISLAND	MUSEUMS	ROCKEFELLER CENTER	YANKEES
ENTERTAINMENT			



If a cow doesn't produce milk, is it a Milk Dud or an udder failure?

I wanted to include a joke about sodium, but I was like, "Na... people won't get it!"

I was watching an Australian cooking show and the audience clapped when the chef made meringue. I was surprised because Australians usually boo meringue!

World Bridge News ...

This is just an excerpt from AI's report the last time this event was held. More hands in later newsletters...

From the World Computer Bridge Championship 2016 by Alvin Levy:

The World Computer-Bridge Championship (WCBC), hosted by the American Contract Bridge League (ACBL) and World Bridge Federation (WBF), was held annually at a major human championship. The 20th Our game World Computer-Bridge Championship was held September 10th-15th 2016 alongside the World Bridge Federation's World Bridge Games in Wroclaw, Poland.

Table 1
The participants in WCBC 2016

Robot	Author	State	Website	RR VPs	Pos.
Bridge Baron	Stephen Smith	USA	www.bridgebaron.com	89.21	3 Q
Meadowlark Bridge	Rodney Ludwig	USA	—	0.89	8 —
Micro Bridge	Tomio and Yumiko Uchida	JPN	www.osk.3web.ne.jp/~mcbridge	90.07	2 Q
Q-Plus Bridge	Hans Leber	DEU	www.q-plus.com	78.76	5 —
Robobridge	Job Scheffers	NLD	www.robobridge.com	50.58	7 —
Shark Bridge	John and Merete Vermehren Norris	DNK	www.sharkbridge.dk	80.12	4 Q
Wbridge5	Yves Costel	FRA	www.wbridge5.com	91.87	1 Q
Xinrui	Yuzhang Liu	CHN	xinruibridge.com	78.50	6 —

The tournament format opened with a 7-round, 32-board all-play-all between the eight participating programs of Table 1, some deals being taken from the human tournament for comparison purposes. The top four robots, see Table 2, advanced to the 64-board knockout semi-final. Each robot is represented by four clones, two as N-S on 'Table 1', two as E-W on 'Table 2' with the same cards dealt. All clones run on identical 'Intel® Core™ i7' computers and each pair has 1m/board.

The Round Robin

In the last round, SHARK BRIDGE picked up 18 IMPs to help take the final qualifying position. The pickup depended on expert play by SHARK BRIDGE and the location of the diamond queen.

Opening lead ♠A from Figure 1. XINRUI, naturally playing South for short diamonds, lost to the ♦Q and went down 1, -100. At the other table, with opening lead ♠A, SHARK BRIDGE ruffed the ♠A and followed by the ♥K and ♥Q, revealing the problematic trump break. A trump coup was now needed to make the contract. This required picking up the ♦Q and North holding at least three clubs and at least two diamonds, so SHARK BRIDGE cashed three rounds of clubs, and cashed the diamond ace and a low diamond to the ten! Now running the clubs produced the needed trump coup. Note that two rounds of diamonds must be played before running playing the fourth club as North will discard a diamond and defeat the contract. +1660, and 18 Imps to SHARK BRIDGE.

(hand and more... continued on page 12)



Table 2
The cross-table of scores in the round-robin phase.

Players	Wbridge5	Micro Bridge	Bridge Baron	Shark Bridge	Q-Plus Bridge	Xinrui	Robo-Bridge	Meadow-Lark Bridge	Total VPs	Pos.
Wbridge5	Imps rnd VPs	77-83 rnd 7 8.73	66-89 rnd 3 5.76	109-82 rnd 4 14.82	88-75 rnd 6 12.60	76-61 rnd 2 12.95	109-64 rnd 5 17.01	266-14 rnd 1 20.00	91.87	1 Q
Micro Bridge	83-77 rnd 7 11.27	Imps rnd VPs	65-104 rnd 6 3.65	78-38 rnd 3 16.46	53-46 rnd 2 11.47	77-80 rnd 5 9.35	94-40 rnd 1 17.87	172-8 rnd 4 20.00	90.07	2 Q
Bridge Baron	89-66 rnd 3 14.24	104-65 rnd 6 16.35	Imps rnd VPs	71-91 rnd 2 6.06	69-100 rnd 5 4.63	67-57 rnd 1 12.05	84-49 rnd 4 15.88	237-7 rnd 7 20.00	89.21	3 Q
Shark Bridge	82-109 rnd 4 5.18	38-78 rnd 3 3.54	91-71 rnd 2 13.94	Imps rnd VPs	81-65 rnd 1 13.12	112-67 rnd 7 17.96	67-86 rnd 6 6.38	172-8 rnd 5 20.00	80.12	4 Q
Q-Plus Bridge	75-88 rnd 6 7.40	46-53 rnd 2 8.53	100-69 rnd 5 15.37	65-81 rnd 1 6.88	Imps rnd VPs	42-65 rnd 4 5.76	112-85 rnd 7 14.82	234-1 rnd 3 20.00	78.76	5 —
Xinrui	61-76 rnd 2 7.05	80-77 rnd 5 10.65	57-67 rnd 1 7.95	67-122 rnd 7 2.04	65-42 rnd 4 14.24	Imps rnd VPs	106-65 rnd 3 16.57	135-1 rnd 6 20.00	78.50	6 —
RoboBridge	64-109 rnd 5 2.99	40-94 rnd 1 2.13	49-84 rnd 4 4.12	86-67 rnd 6 13.62	85-112 rnd 7 5.18	65-106 rnd 3 3.43	Imps rnd VPs	81-11 rnd 2 19.11	50.58	7 —
Meadowlark Bridge	14-266 rnd 1 0.00	0-172 rnd 4 0.00	19-134 rnd 7 0.00	7-237 rnd 5 0.00	1-234 rnd 3 0.00	1-135 rnd 6 0.00	11-81 rnd 2 0.89	Imps rnd VPs	0.89	8 —

Board 10
Dir: E
Vul: both

North
♠ T876
♥ T743
♦ 84
♣ 932

West
♠ —
♥ KQ92
♦ KT73
♣ AQ854

East
♠ QJ
♥ J865
♦ AJ92
♣ KJT

South
♠ AK95432
♥ A
♦ Q65
♣ 76

This event has not taken place for several years. If you are interested in seeing it again, it might be helpful to contact your WBF Reps (Adam Wildavsky or Suzi Subeck or AJ Stephani) to convey your message to the WBF Executive Council!

Table 1 ...

West	North	East	South
Xinrui	Shark Bridge	Xinrui	Shark Bridge
6♦	All Pass	1♦	4♠

Table 2 ...

West	North	East	South
Shark Bridge	Xinrui	Shark Bridge	Xinrui
1♥	Pass	1♦	1♠
Dbl	Pass	2♥	4♠
4NT	Pass	5♣ ¹	Pass
6♥	Pass	Pass	Dbl
All			

¹ 1 keycard

Fig. 1. SHARK BRIDGE – XINRUI: hands and bidding at the two tables.

Logic Puzzle Page

Answer on Page 16

		Lewis	Smith	Stewart	Thompson	Williams	264	273	276	285	288	28	30	32	34	36
		Last Name					High Score					# of Points				
Craig	First Name															
Frank																
Michael																
Steven																
Walter																
28	# of Points															
30																
32																
34																
36																
264	High Score															
273																
276																
285																
288																



Last weekend was the men's annual bowling tournament, an event of competition and fun for the local townspeople. This year, excitement ran high as five contestants bowled neck and neck for the championship. Each time a bowler won a game, he scored two points and the bowler with the highest number of points at the end of the tournament won. Determine the full name of each bowler, their high score (264 to 288), and how many points each won (28 to 36).

Frank, whose last name wasn't Thompson, had the highest score but he didn't win the tournament.

Mr. Smith's high score was three pins higher than that of the bowler with 30 points.

Steven's last name wasn't Stewart. The winner of the tournament, who had 36 points, had an odd number for a high score.

Michael finished the tournament with six points less than Mr. Williams.

The bowler with a high score of 273 had two points more than Mr. Smith but two points less than Craig.

Mr. Thompson won fewer points than Walter but more than Steven Lewis.

Meet the Players

The story below is based on an article from the Columbus Dispatch from September, 2015



At an age when many youngsters start mastering the subtleties of Go Fish, **Doug Simson** was learning how to play bridge from his parents.

"They were home players," he said. "I was about 9 years old when they taught me the game sitting at our kitchen table."

Simson, a lifelong Bexley resident and CEO of First City Bank, a community bank in the Grandview area, learned well and played the game a long way from home when he competed in the 42nd World Bridge Team Championships in Chennai, India. The event took place from Sept. 26 through Oct. 10, 2015.

Simson was the captain of the U.S. team that represented the USA in the senior division. The U.S. also sent a team to play in the all-ages division.

The six-member senior team, which Simson put together, won the U.S. championship in Chicago the spring before the event in India.

"It was a thrill," he said. "I've won five U.S. championships and the World Pan-Am title, but I've never qualified for the world championships."

The squad included three pairs of players who play together throughout the tournament. Two of the players are from Oregon, two are from Indiana and Simson's partner, Jeff Aker, lives in New York City.

Aker had been Simson's bridge partner for five years at the time.

Simson had played for 25 years with Columbus resident Walter Johnson up until Johnson's death.

"It was extremely hard to find a new partner. It was trial and error," he said. "I tried several people." He clicked with Aker and they've played regularly since.

Simson is playing at this championship on the Simson team. His team includes Eric Rodwell, Eddie Wold, Joel Wooldridge, David Grainger, and Venkatrao Koneru.

Riddles

Q: What has a bottom at the top?

A: Your legs.

Q: What can you catch but never throw?

A: A cold.

Q: What has many teeth but cannot bite?

A: A comb.

Q: What has branches, but no fruit, trunk, or leaves?

A: A bank.

Q: What thrives when you feed it but dies when you water it?

A: A fire.

Q: What do you buy to eat but never consume?

A: Cutlery.

Q: Two fathers and two sons are in a car, yet there are only three people in the car. How?

A: They are grandfather, father, and son.

Q: A bus driver goes the wrong way down a one-way street. He passes the cops, but they don't stop him. Why?

A: He was walking.

Q: If an electric train is traveling south, then which way is the smoke going?

A: There is no smoke—it's an electric train.

Q: Where is the only place where today comes before yesterday?

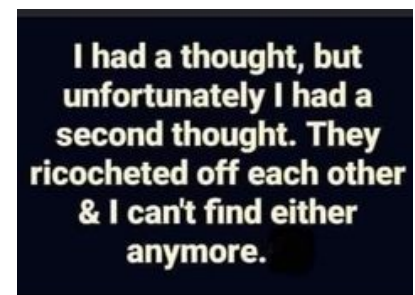
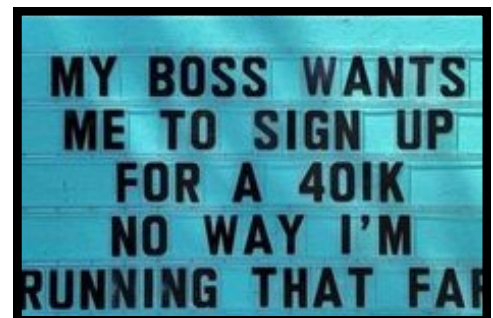
A: The dictionary.

Q: What can you put in a bucket to make it weigh less?

A: A hole.

Q: How can kids drink beer and not get drunk?

A: By sticking to root beer.



For those of you who are interested, Ela has agreed to come to the Hyatt to provide massages any day that we have 3 or more people who want her. So if you want a massage, please let me know a day or two in advance, including what your timing is, and I'll try to make things work.

For now, Ela said she could come on April 30th for anyone who wants a post-flight, pre-tournament massage. So if you want one, please let me know and tell me what time(s) would work for you.

I think Ela still charges \$100 for an hour. She'll be setting her table up in my room (5117) and will have a key so she can get in and can let you in when it's your turn. Any questions, let Jan know!



**Massage Therapist
message from Jan**

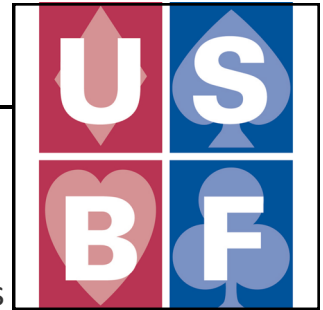
9	4	2	8	7	1	6	5	3
6	3	7	9	4	5	2	8	1
5	8	1	2	3	6	4	7	9
8	7	9	1	6	3	5	2	4
4	1	5	7	8	2	3	9	6
3	2	6	5	9	4	8	1	7
7	9	3	4	5	8	1	6	2
2	6	8	3	1	9	7	4	5
1	5	4	6	2	7	9	3	8

8	6	1	9	4	2	5	3	7
2	9	7	1	5	3	8	6	4
5	4	3	8	7	6	1	2	9
3	5	6	7	8	1	9	4	2
4	8	2	6	3	9	7	5	1
1	7	9	4	2	5	3	8	6
9	1	4	5	6	8	2	7	3
7	3	8	2	1	4	6	9	5
6	2	5	3	9	7	4	1	8

Sudoku Answers Puzzles on Page 9

Answer to Sudoku 1

Answer to Sudoku 2



USBF Supporting Membership

If you don't want to play in the USBF Championships that choose teams to represent the USA in the World Bridge Federation Championships, but do want to aid our events, a **Supporting Membership** can be the perfect way for you to be involved.

A Supporting Membership is \$25 for one year (\$75 for 3 years) and your donation will be used to cover inevitable expenses: attorney fees, accounting fees, website support services, tournament directors, insurance, WBF dues, and vugraph operators.

The USBF is an **all-volunteer** organization.

Our meetings are by conference call and at NABCS. Board members and the organization's officers are not compensated for meetings, travel, or hotel expenses.

Q: Take off my skin - I won't cry, but you will! What am I?

A: An onion.

Q: What invention lets you look right through a wall?

A: A window.

Q: What is always on its way but never arrives?

A: Tomorrow.

Q: Two girls were born to the same mother, on the same day, at the same time, in the same month and year, and yet they're not twins. How can this be?

A: The two babies are two of a set of triplets.

Answer to Logic Puzzle On Page 13

36	285	Stewart	Walter
30	273	Lewis	Steven
28	276	Smith	Michael
34	288	Williams	Frank
32	264	Thompson	Craig
# of Points	High Score	Last Name	First Name

HOME CARDS SPLIT

LoveBridge

W	N	E	S
PASS	1♥	PASS	2♣
PASS	2NT	PASS	3♥
PASS	3♠	PASS	3NT
PASS	4♦	PASS	4NT
PASS	5♦	PASS	6♥
PASS	PASS	PASS	

2C=2+ GF
3NT=serious
5D=0 or 3

Board 4

DDS

♠ AQ5
♥ K6543
♦ A64
♣ T4
N Bobby Levin

♠ J86
♥ T97
♦ 872
♣ K872
W Brad Moss

♠ K7432
♥ 8
♦ QJT95
♣ 53
E Joe Grue

♠ T9
♥ AQJ2
♦ K3
♣ AQJ96
S Steve Weinstein

Levin/Weinstein bid to the heart slam from North in the Open Room on Board 4. (Slam fails from South on a spade lead through the AQ5.) Grue led the DJ and Levin won the ace. Levin played a heart to the jack, cashed the HA and claimed 12 tricks. At the other table, Greco, E, overcalled 1H with 1S. Hurd bid 2NT showing an invite with 4 H. Bathurst bid 3C (art GF no slam interest). Hurd bid 3D (something in the suit.) Bathurst bid 4H and played it there. 13 IMPs to Nickell

		NS	EW	Home	Visiting
Nickell	Fleisher	Open	6♥ N ♦ J =	1430	13
		Closed	4♥ N ♣ 5 +2	680	

A little Color Commentary: The Closed Room is running between 3 and 4 boards behind the Open Room after 8 Boards. Board 6 was flat:

		NS	EW
1	Nickell	Fleisher	Open 3N N ♦ 6 +1 430
			Closed 3N N ♦ 6 +1 430

Board 7 produced a flat result when Grue and Moss played in 6D down 2 while Greco and Hampson played in 6S, also down 2.

The hand:

Board 7

BOARD: 7
DEALER: SOUTH
VULNERABLE: ALL

♠ T
♥ KQT5
♦ 97652
♣ JT5

♠ AQJ7
♥ A7
♦ QJT4
♣ A64

♠ K843
♥ J4
♦ AK83
♣ K73

Par: -660

	♣	♦	♥	♠	N
NS	4	3	8	2	2
E	8	10	5	11	11
W	:	:	:	10	:

♠ 9652
♥ 98632
♦
♣ Q982

Home team Visiting team Room By =

		NS	EW
Nickell	Fleisher	Open	6♦ W ♥ K -2 200
		Closed	6♠ E ♥ 2 -2 200

BOARD: 12

DEALER: WEST

VULNERABLE: N-S

♠ AKT85

♥ Q65

♦ 953

♣ Q5

♠ QJ9

♥ KT73

♦ 72

♣ J874

♠ 743

♥ J92

♦ Q864

♣ AK3

Par: 650

	♣	♦	♥	♠	N
NS	8	10	8	11	10
EW	5	3	5	2	3

♠ 62

♥ A84

♦ AKJT

♣ T962

		Room		By		=		★		IMP	
								NS		EW	
Nickell	Fleisher		Open	3N	N	♣A	=	600			12
			Closed	3N	N	♣A	-1	100			

North/South can always collect at 9 tricks in 3NT. In fact, according to the Double Dummy frequency chart, they can actually collect 10. Both tables bid to the game from North and both declarers got the same opening lead.

In the Open Room, Bobby Levin successfully took 9 tricks. Grue won his club and switched to a low heart. Moss won the king and continued hearts. Levin won the queen and finessed against the DQ. He played the C6 to the Q and K. Grue played the C3 to Moss's jack and Moss played the S9. Levin won the ace, played a diamond to the ace, cashed the CT, cashed the HA, played a spade to the king and repeated the diamond finesse. Contract making +600 N/S

In the Closed Room, Greco also led the CA. Like Grue, he switched to a low heart and Hampson won his king. Like Moss, Hampson continued the attack on hearts, Bathurst

winning the queen. Bathurst took the diamond finesse, played the C6 to the Q and K; Greco exited with the HJ to dummy's ace.

At this point, Bathurst slipped... The defense had 3 tricks in and Hampson was holding the good CJ and H7. He couldn't afford to let Hampson get on lead. He could take the double finesse in spades using a high diamond as an entry back to dummy to score 9. Alas, he played the CT. Hampson won and cashed the setting trick. 12 IMPs to Nickell

BOARD: 18
DEALER: EAST
VULNERABLE: N-S

♠ QJ982
 ♥ 75
 ♦ KT
 ♣ 8753

♠ AT4
 ♥ J6
 ♦ Q87632
 ♣ KT

♠ 763
 ♥ KQT82
 ♦ 4
 ♣ Q964

Par: 500

	♣	♦	♥	♠	N
N	8	8	5	8	8
S	:	:	6	:	9
EW	5	5	7	3	4

♠ K5
 ♥ A943
 ♦ AJ95
 ♣ AJ2

On Board 18, two very different auctions led to two very different contracts and two very different results.

In the Open Room, Hampson and Greco bid to 3NT from South ... important because a club lead from East will defeat the game.

Home team Visiting team Room By = IMP
 NS EW Home Visiting

Nickell Fleisher
 Open 3N S ♦6 = 600 12
 Closed 3♠ N ♦4 -1 100

Martel led the D6. Hampson won the ten in dummy and led a spade to his king, ducked. He led a spade to the queen and continued with the SJ, Martel winning his ace. Martel continued diamonds, Fleisher shedding a heart. Hampson cashed two rounds of spades and led the C7 to Martel's ten. Martel played the HJ, Hampson winning his ace. He cashed the CA for his 8th trick and the DA for his 9th.

Contract successful. +600 Nickell

In the other room, Katz started with an uncharacteristic 2H... uncharacteristic for the Nickell/Katz partnership that is. Bathurst overcalled 2NT showing his strong values Hurd signed off in 3S.

Katz led his singleton diamond, Hurd winning with the jack in dummy. Hurd played the SK and Nickell took his ace. Nick gave Ralph a diamond ruff. Ralph exited a club to dummy's ace. Hurd played a spade to his queen and cashed his SJ. At this juncture, he can lead a heart and take 9 tricks, but he led the C5. Nickell won and led the H6, dummy winning the ace. Hurd played dummy's ace of diamonds and jack of clubs and claimed down one!

12 IMPs to Nickell

BOARD: 29
DEALER: NORTH
VULNERABLE: ALL

♠ 5
 ♥ AQ98
 ♦ J864
 ♣ J964

♠ A98642
 ♥
 ♦ 9
 ♣ AK8532

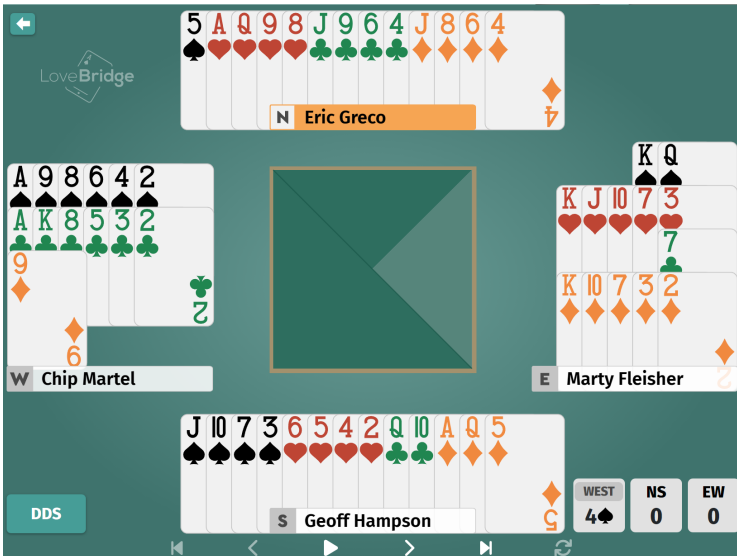
♠ KQ
 ♥ KJT73
 ♦ KT732
 ♣ 7

Par: -140

	♣	♦	♥	♠	N
NS	4	6	6	4	6
EW	9	7	7	9	6

♠ JT73
 ♥ 6542
 ♦ AQ5
 ♣ QT

Michael Rosenberg was overheard in the Hospitality Suite declaring that, "Board 29 in the Open Room" this morning was the highlight of the tournament. Both tables bid to 4S. Martel played it brilliantly to make it.



Greco led the D6. Hampson won the queen. Hampson continued with the DA and Martel ruffed with the S6. Martel cashed the ace and king of clubs, discarding a heart from dummy. He ruffed the C2 with the SK, Hampson discarding his small diamond.

Martel led the DK off dummy; Hampson ruffed with the ST and Martel over ruffed with the SA. Declarer's C3 was ruffed with dummy's SQ, South discarding a heart.

Martel led the D3 from dummy; Hampson threw a heart; Martel ruffed with the trump deuce; and Greco followed with the DJ.

The S9 went to the 5, H7 and Hampson's jack. Hampson played the H5. Martel threw a club. Greco won the ace and had to lead a heart. The position: →

Greco accordingly led the H8. Martel rose with dummy's king and played a club from his hand. He played the HJ off the board and couped poor Hampson in trump to collect his 10 tricks. Really well done, Chip.

(continued on page 21)



In the Closed Room, Nickell and Katz also bid to 4S.

LoveBridge interface showing a bridge game. The bidding table is as follows:

	W	N	E	S
	PASS	1♥	PASS	
	1♠	PASS	2♦	PASS
	3♣	PASS	3♠	PASS
	4♣	PASS	4♠	PASS

Hand information:

- North (John Hurd):** 5♠, A♥, Q♥, 9♥, 8♥, J♣, 9♣, 6♣, 4♣, J♦, 8♦, 6♦, 4♦
- West (Nick Nickell):** A♠, 9♠, 8♠, 6♠, 4♠, 2♠, A♥, K♥, 8♥, 5♥, 3♥, 2♥, 9♦, 6♦, 2♣
- East (Ralph Katz):** K♥, J♥, 10♥, 7♥, 3♥, K♦, 10♦, 7♦, 3♦, 2♦, K♠, Q♠, 7♣
- South (Kevin Bathurst):** J♠, 10♠, 7♠, 3♠, 6♥, 5♥, 4♥, 2♥, Q♣, 10♣, A♦, Q♦, 5♦

Score card: WEST 4♠ = -620, NS 0, EW 0. Dealer is West 29.

Hurd, like Greco, led the D6. Bathurst won the queen. Unlike Hampson, Bathurst did not try the DA. Instead, he very accurately led the S3. Nick won the queen in dummy and continued with the SK, Hurd discarding a heart. The C7 went to the ace and the CK was cashed, Nickell throwing a small heart from dummy. The club deuce was led and Hurd won his nine. The contract was doomed when Bathurst played a spade at trick 2. Nick never had the chance to be brilliant. Great declarer play and great defense by the Fleisher squad. 12 well earned IMPs!

Board information: BOARD: 33, DEALER: NORTH, VULNERABLE: NONE.

Hand cards shown:

- ♠ QJT4, ♥ QT973, ♦ AJ63, ♣
- ♠ 765, ♥ 52, ♦ T9, ♣ AQ8432
- ♠ AK2, ♥ A, ♦ KQ85, ♣ JT975
- ♠ 983, ♥ KJ864, ♦ 742, ♣ K6

Score card: Par: -800

	♣	♦	♥	♠	N
N	1	4	8	5	1
S	:	2	7	:	:
EW	12	8	4	7	9

Game summary table:

Home team	Visiting team	Room	By	By	=	NS	EW	Home	Visiting	IMP
Nickell	Fleisher	Open	4♥	S	♦T	-2	100			11
		Closed	5♣x	W	♠Q	+1	650			

Nickell struck back on Board 33.

In the Open Room, Weinstein and Levin bid to 4H after a Flannery opening. Declarer has to lose one diamond, two spades and a heart for down one.

In the Closed Room, things were more interesting.

BOARD: 33
DEALER: NORTH
VULNERABLE: NONE

♠ QJT4
♥ QT973
♦ AJ63
♣

♠ 765
♥ 52
♦ T9
♣ AQ8432

♠ AK2
♥ A
♦ KQ85
♣ JT975

Par: -800

N	1	4	8	5	1
S	:	2	7	:	:
EW	12	8	4	7	9

♠ 983
♥ KJ864
♦ 742
♣ K6

Home team	Visiting team	Room	By	=	NS	EW	Home	Visiting
Nickell	Fleisher	Open	4♥	S	♦T	-2	100	11
		Closed	5♣x	W	♠Q	+1	650	

Nickell struck back on Board 33.

In the Open Room, Weinstein and Levin bid to 4H after a Flannery opening. Declarer has to lose one diamond, two spades and a heart for down one.

In the Closed Room, things were more interesting.

Nickell/Katz bid to 5C. Moss doubled and led the SQ. Nick won the ace in dummy and finessed against the trump king, Moss pitching a heart. Nick continued with the CT to the king and ace, Moss pitching a spade.

W N E S
1♥ DBL 4♥
PASS PASS DBL PASS
5♣ DBL PASS PASS
PASS

4H=Precision style, to play
X=I want to bid 5H

Score card >
Frequency >
Live scores >

DEALER WEST 33 EAST SOUTH

WEST NS EW
5♣x 0 0

The D9 went to the king, followed by the C9 to Nick's queen, both opponents discarding hearts. The DT went to Moss's ace. Nick claimed 12 tricks! +650 combined with their teammates -100 yielded 11 IMPs to Nickell... Well bid, Nickell and Katz!

Cross IMPs:

1.	John Hurd - Kevin Bathurst	Fleisher	1.98	89.00	45
2.	Brad Moss - Joe Grue	Fleisher	1.31	59.00	45
3.	Chip Martel - Marty Fleisher	Fleisher	0.40	12.00	30
4.	Nick Nickell - Ralph Katz	Nickell	-0.40	-12.00	30
5.	Bobby Levin - Steve Weinstein	Nickell	-1.31	-59.00	45
6.	Eric Greco - Geoff Hampson	Nickell	-1.98	-89.00	45